

# Road Traffic Management



**DATASHEET**



## INTRODUCTION

Milesight Road Traffic Management Camera combines video surveillance with AI, ANPR, 3D Radar and other cutting-edge technologies helps traffic management agencies systematically and intelligently monitor and understand road users' behavior and gain valuable insights based on real-time data to optimize traffic flow, minimize accident risks, and respond to emergencies more efficiently. It can be widely used in urban public security management systems, which can significantly improve management efficiency and make traffic smarter, safer and smoother.



**AI Road Traffic Pro Bullet Plus Camera**

- 4X Optical Zoom
- 1/2.8" STARVIS Starlight Sensor
- 100fps
- 3 in 1 Super WDR Pro - 140dB
- Up to 30m Illumination Distance
- Smart IR II Technology
- IP67 & IK10
- Versatile Interfaces
- Integrated Cable Management



**AI Road Traffic Radar Pro Bullet Plus Camera**

- Advanced 3D Radar Technology
- 4X Optical Zoom
- 1/2" STARVIS Starlight Sensor
- 100fps
- 3 in 1 Super WDR Pro - 140dB
- Up to 30m Illumination Distance
- Smart IR II Technology
- IP67
- Versatile Interfaces
- Easy Deployment and Compact Structure
- Integrated Cable Management



**AI Road Traffic Supplement Light Pro Bullet Plus Camera**

- Integrated Supplement Light
- Wiegand Protocol Supported
- 4X Optical Zoom
- 1/2" STARVIS Starlight Sensor
- 100fps
- 3 in 1 Super WDR Pro - 140dB
- Up to 40m Illumination Distance
- Smart IR II Technology
- IP67
- Versatile Interfaces



**AI Road Traffic PTZ Bullet Camera**

- Flexible Pan, Tilt and Zoom Tasks
- 12X Optical Zoom
- 1/2.8" STARVIS Starlight Sensor
- 100fps
- 3 in 1 Super WDR Pro - 140dB
- Up to 30m Illumination Distance
- Smart IR II Technology
- Intelligent White LED
- Smart PTZ Motion Detection
- IP66
- Keyboard Control



**AI Road Traffic PTZ Bullet Plus Camera**

- New-generation PTZ Motor
- Flexible Pan, Tilt and Zoom Tasks
- 5X Optical Zoom
- 1/2" STARVIS Starlight Sensor
- 100fps
- 3 in 1 Super WDR Pro - 140dB
- Up to 30m Illumination Distance
- Smart IR II Technology
- Intelligent White LED
- Smart PTZ Motion Detection
- IP66
- Keyboard Control



**AI Road Traffic Speed Dome Camera**

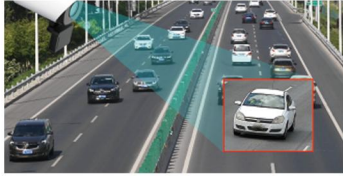
- Smart Rain-Sensing Wiper (Optional)
- 36X Optical Zoom
- 1/2" STARVIS Starlight Sensor
- 100fps
- 3 in 1 Super WDR Pro - 140dB
- Up to 50m Illumination Distance
- Smart IR II Technology
- Smart PTZ Motion Detection
- IP66
- Keyboard Control
- Versatile Interfaces
- Exquisite Design

# Road Traffic Management



## Application of Milesight Traffic Solution

### Advanced AI LPR Algorithm Improves Road Safety



#### No-plate Vehicle Capture

- Real-time Detection of Vehicles without License Plates.
- Capture Snapshot & Smart Search.



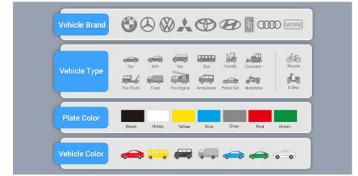
#### Specific Lane Management

- Detection of Cars and Trucks Traveling or Parking in Bus Lanes.
- Customize Permitted Vehicles & Residence Time.



#### Parking Violation Detection

- Real-time Capture of Violated Vehicles that Exceed the Set Time.
- Smart Parking Search.



#### Vehicle Attributes Alarm based on Schedule

- Various Vehicle Attributes Recognition to Search & Locate Target Vehicles Faster.
- Avoid Illegal Vehicles on the Road.
- Locate Stolen & Abnormal Vehicles.



#### Speeding Detection



#### Reverse Driving Detection (Only for Radar Models)



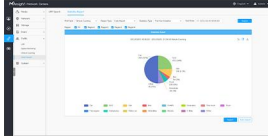
#### Black/White List Management

### Ideal for Traffic Flow Statistics and Analysis



#### Vehicle Counting Based on Vehicle Type

- Car/Motorcycle/Non-motor
- Small/Medium/Large Vehicle
- Various Vehicle Attributes.



#### Intuitive Report

- The Vehicle Counting Results are Visually Displayed in The Live View Interface.
- Multiple Report Types including Line Chart and Pie Chart.

### Evidence Capture Improves Enforcement Efficiency



#### Evidence Camera Linkage

- Linking LPR Camera and Regular Camera for Evidence Capture.
- LPR Camera for License Plate Recognition and Linkage Triggering.
- Regular Camera for Full Snapshot of the Scene.



#### LPR Smart Search Function

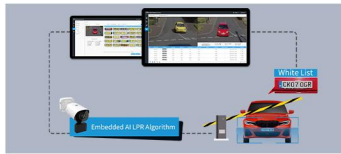
- Real-time detection results.
- Detected time, live screenshot, license plate.
- Search by Plate Color, Vehicle Type & Color, Speed, Direction, etc.
- Manual Export & Auto Export.

### Intelligent Plate Data Management Helps Enhance City Management



#### Black/White List Management

- Add the license plates & Batch Upload.
- Black List/White List/Visitor Mode.
- List Scheduling Management.
- Set the alarm action for the plates.



#### Stand alone LPR Solution

- Built-in AI LPR Algorithm.
- Embedded Black & White Lists.



#### Closed-loop Back-end Integration

- Full Compatibility with Milesight Back-ends.
- Completely Closed-loop ANPR Solutions.



#### Open Integration with 3rd Party

- Various CGI/APIs.
- Diverse Protocols Available to Reduce Extra Human Labour (Wiegand, TCP, HTTP, etc.).
- Full Data Push.

## License Plates Administration Backed by Intelligence

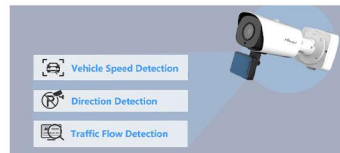
### Improve Road Safety and Enforcement Efficiency



#### Embedded AI LPR Algorithm



#### AI-based Vehicle Attributes Recognition



#### Integrated 3D Radar Technology



#### Broad Range of Countries and Regions Supported

# Road Traffic Management



## Superior Image Quality for 24/7 Traffic Monitoring

### Excellent Capture Performance

- Stunning Image Performance Even in the Night



• LPR Image



• Integrated Supplement Light



HLC Off



HLC On

• HLC (Highlight Compensation)



By Conventional Camera



By Milsight Camera

• 0.002Lux Starlight

- Accurately Capture Plates of Fast Moving Vehicles



Dynamic Clarity Off



Dynamic Clarity On



30fps@1080P



100fps@1080P

- Excellent Capture Performance at High Speed and

**200km/h**

Recognizable Speed

**>95%**

High Recognition Accuracy



License Plate  
Serial Format

**4**

Detection  
Regions

## Maximized Flexibility for Your Convenience

### Unique Design, Easy and Flexible Installation



- Integrated Junction



- Clamshell Design & Integrated Cable Management



- 3-Axis Mechanical Design





- Flexible Pan, Tilt and Zoom Tasks for ANPR



OBTAIN  
THE USER MANUAL



	Name	AI Road Traffic Pro Bullet Plus Camera	AI Road Traffic Radar Pro Bullet Plus Camera
<b>Camera</b>	Appearance		
	Model	TS2866-X4TPC (2MP)	TS2866-X4TVPC (2MP)
	Image Sensor	1/2" Progressive Scan CMOS	
	Min. Illumination	Color: 0.002Lux@F1.6 B/W: 0Lux with IR on	
	WDR	140dB Super WDR Pro	
	Shutter Time	1/100000s~1s	
	Day/Night Mode	Day/Night/Auto/Customize/Schedule	
	S/N	>55dB	
<b>Lens</b>	Lens	8~32mm, 4X Optical Zoom	
	Field of View	H44°~H13°/D51°~D15°/V25°~V7°	
	Mount	Φ14	
	Focus Control	Auto/Manual	
	Aperture	F1.6~F1.7	
	Iris Control	Auto	
<b>Road Traffic Management</b>	Max. Vehicle Speed	200km/h	
	Recognition Accuracy	>95%	
	Coverage	Support simultaneous detection of 4 regions	
	Country Region Supported	More than 80 countries and regions	
	Illumination Distance	Up to 30m	
	Attributes Identification	Plate Color, Vehicle Type, Vehicle Color, Vehicle Brand, No-plate Vehicle Capture	Plate Color, Vehicle Type, Vehicle Color, Vehicle Brand, No-plate Vehicle Capture, Vehicle Direction Detection, Speed Detection, Traffic Flow Detection
	Smart Traffic Function	Evidence Camera Linkage, Vehicle Counting Based on Vehicle Type, Specific Lane Management	
	White/Black List	Up to 1000 records inside the camera	
LPR Smart Search	Support		
<b>Radar</b>	Working Frequency	-	60GHz, 61~62GHz
	Capture Rate	-	>99% (Traffic jam >95%)
	Lane Coverage	-	1~4 Lanes (Recognition ≥95% individually)
	Tracking Target	-	Up to 32
	Speed Detection Range	-	±5km/h~±200km/h
	Speed Detection Accuracy	-	±0.36km/h
	Detection Distance	-	Up to 90m
	Distance Detection Accuracy	-	±0.4m
	Angle Measurement Accuracy	-	±0.5°
	Installation Height	-	2~7m

# Road Traffic Management



<b>Interface</b>	Ethernet	1*RJ45 10M/100M Ethernet Port
	Audio I/O	1/1
	Alarm I/O	1/1
<b>Video</b>	Max. Image Resolution	1920x1080
	Primary Stream	60Hz/50Hz: 100fps@(1920x1080, 1280x960, 1280x720, 704x576)
	Secondary Stream	60Hz: 60fps@(704x576, 640x480, 640x360, 352x288, 320x240, 320x192, 320x180) 50Hz: 50fps@(704x576, 640x480, 640x360, 352x288, 320x240, 320x192, 320x180)
	Tertiary Stream	60Hz: 30fps@(1920x1080, 1280x720, 704x576, 640x480, 640x360, 320x240, 320x192, 320x180) 50Hz: 25fps@(1920x1080, 1280x720, 704x576, 640x480, 640x360, 320x240, 320x192, 320x180)
	Video Compression	H.265+/H.265(HEVC)/H.264+/H.264/MJPEG
	Video Bit Rate	16Kbps~16Mbps(CBR/VBR Adjustable)
	Privacy Masking	Up to 28 areas(24 mask areas and 4 mosaic areas)
	ROI	Up to 8 areas
	Image Setting	Brightness/Contrast/Saturation/Sharpness
<b>Network</b>	Network Storage	NAS(Support NFS, SMB/CIFS), ANR
	Protocol	IPv4/IPv6, ARP, TCP, UDP, RTCP, RTP, RTSP, RTMP, HTTP, HTTPS, DNS, DDNS, DHCP, FTP, NTP, SMTP, SNMP, UPnP, Bonjour, SIP, PPPoE, VLAN, 802.1x, QoS, IGMP, ICMP, SSL
<b>Audio</b>	Audio Compression	G.711/AAC/G.722/G.726
	Audio Sampling Rate	8/16/32/44.1/48KHz
	Audio Bit Rate	16~256kbps
	Two-way Audio	Support
<b>System</b>	System Compatibility	API, HTTP, TCP, ONVIF Profile G & Q & S & T
	Storage	Support microSD/SDHC/SDXC Card Local Storage, up to 256G
	Advanced Function	BLC, HLC, 2D DNR, 3D DNR, Defog, AWB, EIS, IP Address Filtering, AGC, Anti-flicker, Corridor Mode, Deblur, Watermark
	SIP/VoIP Support	Yes, Voice & Video-over-IP
	Event Trigger	Black/White List, Attributes Event, Motion Detection, Network Disconnection, External Input, Audio Alarm, etc.
	Event Action	FTP Upload, SMTP Upload, SD Card Record, External Output, SIP Phone, HTTP Notification, etc
<b>General</b>	Working Temperature	-40°C~60°C
	Working Humidity	0~95%(Non-condensing)   5~90%(Non-condensing)
	Power Supply	PoE (802.3at) / DC 12V±10%
	Power Consumption	8W MAX 14W MAX (With IR on)
	Weather Proof	Up to IP67-rated for Weather-resistant Performance
	Housing	Vandal-proof IK10-rated Metal Housing   Vandal-proof IK10-rated Metal Housing (Without Radar Module)
	Surge Protection	4KV
	Weight	1445.8g   1623g
	Dimensions	320mmX134mmX126mm   320mmX134mmX171mm
	Warranty	3/5 Years





	Name	AI Road Traffic Supplement Light Pro Bullet Plus Camera	
Camera	Appearance		
	Model	TS2866-X4TWC /W (2MP)	TS2866-X4TWC /R (2MP)
	Image Sensor	1/2" Progressive Scan CMOS	
	Min. Illumination	Color: 0.002Lux@F1.6 B/W: 0Lux with IR on	
	WDR	140dB Super WDR Pro	
	Shutter Time	1/100000s~1s	
	Day/Night Mode	Day/Night/Auto/Customize/Schedule	
	S/N	>55dB	
Lens	Lens	8~32mm, 4X Optical Zoom	
	Field of View	H44°~H13°/D51°~D15°/V25°~V7°	
	Mount	Φ14	
	Focus Control	Auto/Manual	
	Aperture	F1.6-F1.7	
	Iris Control	Auto	
Road Traffic Management	Max. Vehicle Speed	200km/h	
	Recognition Accuracy	>95%	
	Coverage	Support simultaneous detection of 4 regions	
	Country Region Supported	More than 80 countries and regions	
	Illumination Distance	Up to 40m	
	Attributes Identification	Plate Color, Vehicle Type, Vehicle Color, Vehicle Brand, No-plate Vehicle Capture	
	Smart Traffic Function	Evidence Camera Linkage, Vehicle Counting Based on Vehicle Type, Specific Lane Management	
	White/Black List	Up to 1000 records inside the camera	
	LPR Smart Search	Support	
Illuminator	Supplement Light	White LED Light	IR LED Light
	Light Bead	6 (For White LED Light)	9 (For IR LED Light)
	Light Control	Auto/Always On/Off/Customize	
Interface	Ethernet	1*RJ45 10M/100M Ethernet Port	
	Audio I/O	1/1	
	Alarm I/O	1/1	
	Wiegand	Standard Wiegand 26-bit	

# Road Traffic Management



<b>Video</b>	Max. Image Resolution	1920x1080	
	Primary Stream	60Hz/50Hz: 100fps@(1920x1080, 1280x960, 1280x720, 704x576)	
	Secondary Stream	60Hz: 60fps@(704x576, 640x480, 640x360, 352x288, 320x240, 320x192, 320x180) 50Hz: 50fps@(704x576, 640x480, 640x360, 352x288, 320x240, 320x192, 320x180)	
	Tertiary Stream	60Hz: 30fps@(1920x1080, 1280x720, 704x576, 640x480, 640x360, 320x240, 320x192, 320x180) 50Hz: 25fps@(1920x1080, 1280x720, 704x576, 640x480, 640x360, 320x240, 320x192, 320x180)	
	Video Compression	H.265+/H.265(HEVC)/H.264+/H.264/MJPEG	
	Video Bit Rate	16Kbps~16Mbps(CBR/VBR Adjustable)	
	Privacy Masking	Up to 28 areas(24 mask areas and 4 mosaic areas)	
	ROI	Up to 8 areas	
	Image Setting	Brightness/Contrast/Saturation/Sharpness	
<b>Network</b>	Network Storage	NAS(Support NFS, SMB/CIFS), ANR	
	Protocol	IPv4/IPv6, ARP, TCP, UDP, RTCP, RTP, RTSP, RTMP, HTTP, HTTPS, DNS, DDNS, DHCP, FTP, NTP, SMTP, SNMP, UPnP, Bonjour, SIP, PPPoE, VLAN, 802.1x, QoS, IGMP, ICMP, SSL	
<b>Audio</b>	Audio Compression	G.711/AAC/G.722/G.726	
	Audio Sampling Rate	8/16/32/44.1/48KHz	
	Audio Bit Rate	16~256kbps	
	Two-way Audio	Support	
<b>System</b>	System Compatibility	API, HTTP, TCP, Wiegand Protocol, ONVIF Profile G & Q & S & T	
	Storage	Support microSD/SDHC/SDXC Card Local Storage, up to 256G	
	Advanced Function	BLC, HLC, 2D DNR, 3D DNR, Defog, AWB, EIS, IP Address Filtering, AGC, Anti-flicker, Corridor Mode, Deblur, Watermark	
	SIP/VoIP Support	Yes, Voice & Video-over-IP	
	Event Trigger	Black/White List, Attributes Event, Motion Detection, Network Disconnection, External Input, Audio Alarm, etc.	
	Event Action	FTP Upload, SMTP Upload, SD Card Record, External Output, SIP Phone, HTTP Notification, etc	
<b>General</b>	Working Temperature	-40°C~60°C	
	Working Humidity	5~90%(Non-condensing)	
	Power Supply	DC 12V / 3A±10% (Non-PoE)	
	Power Consumption	4W MAX 30W MAX (For White LED Light)	4W MAX 31W MAX (For IR LED Light)
	Surge Protection	4KV	
	Weather Proof	Up to IP67-rated for Weather-resistant Performance	
	Housing	Vandal-proof IK10-rated Metal Housing (Without Supplement Light)	
	Surge Protection	4KV	
	Weight	1445.8g 2100g (With Supplement Light)	
	Dimensions	282mmX108mmX120mm 282mmX108mmX225mm (With Supplement Light)	
	Warranty	3/5 Years	



	Name	AI Road Traffic PTZ Bullet Camera	AI Road Traffic PTZ Bullet Plus Camera
<b>Camera</b>	Appearance		
	Model	TS2961-X12TPC (2MP)	TS2867-X5TPC (2MP)
	Image Sensor	1/2.8" Progressive Scan CMOS	1/2" Progressive Scan CMOS
	Min. Illumination	Color: 0.005Lux@F1.6 B/W: 0Lux with IR on	Color: 0.002Lux@F1.7 B/W: 0Lux with IR on
	WDR	140dB Super WDR Pro	
	Shutter Time	1/100000s~1s	
	Digital Zoom	16X	
	Day/Night Mode	Day/Night/Auto/Customize/Schedule	
	S/N	>55dB	
<b>Lens</b>	Focal Length	5.3~64mm, 12X Optical Zoom	11~55mm, 5X Optical Zoom
	Zoom Speed	Approx 4s (Wide-Tele)	Approx 3.5s (Wide-Tele)
	Field of View	H61°~H5°/D69°~D5°/V36°~V2°	H34°~H8°/D39°~D9°/V20°~V4°
	Focus Control	Auto/Semi-Auto/Manual	
	Minimum Working Distance	1000/1500mm (Wide/Tele)	
	Aperture	F1.6~F2.8	F1.7~F2.1
	Iris Control	Auto	
<b>Road Traffic Management</b>	Max. Vehicle Speed	200km/h	
	Recognition Accuracy	>95%	
	Coverage	Support simultaneous detection of 4 regions	
	Country Region Supported	More than 80 countries and regions	
	Illumination Distance	Up to 30m	
	Attributes Identification	Plate Color, Vehicle Type, Vehicle Color, Vehicle Brand, No-plate Vehicle Capture	
	Smart Traffic Function	Evidence Camera Linkage, Vehicle Counting Based on Vehicle Type, Specific Lane Management	
	White/Black List	Up to 1000 records inside the camera	
	LPR Smart Search	Support	
<b>Interface</b>	Ethernet	1*RJ45 10M/100M Ethernet Port	
	Audio I/O	1/1 (Optional)	1/1
	Alarm I/O	1/1 (Optional)	1/1
<b>PTZ</b>	Pan Range/Pan Speed	360°endless / Pan Manual Speed: 0.1~50°/s, Pan Preset Speed: 50°/s	360°endless / Pan Manual Speed: 0.1~60°/s, Pan Preset Speed: 60°/s
	Tilt Range/Tilt Speed	-45°~30° / Tilt Manual Speed: 0.1~25°/s, Tilt Preset Speed: 25°/s	-45°~30° / Tilt Manual Speed: 0.1~30°/s, Tilt Preset Speed: 30°/s
	Proportional Zoom	Support	
	Preset Quantity	300	
	Patrol	8 Patrols, up to 48 presets each patrol	





# Road Traffic Management



<b>PTZ</b>	Pattern	4 Patterns	
	Power Off Memory	Support	
	Other Function	Auto Scan, Auto Home, Preset Freezing, 3D Positioning, PTZ Limits, Initial Position	
<b>Video</b>	Max. Image Resolution	1920x1080	
	Primary Stream	60Hz/50Hz: 100fps@(1920x1080, 1280x960, 1280x720, 704x576)	
	Secondary Stream	60Hz: 60fps@(704x576, 640x480, 640x360, 352x288, 320x240, 320x192, 320x180) 50Hz: 50fps@(704x576, 640x480, 640x360, 352x288, 320x240, 320x192, 320x180)	
	Tertiary Stream	60Hz: 30fps@(1920x1080, 1280x720, 704x576, 640x480, 640x360, 320x240, 320x192, 320x180) 50Hz: 25fps@(1920x1080, 1280x720, 704x576, 640x480, 640x360, 320x240, 320x192, 320x180)	
	Video Compression	H.265+/H.265(HEVC)/H.264+/H.264/MJPEG	
	Video Bit Rate	16Kbps~16Mbps(CBR/VBR Adjustable)	
	Privacy Masking	Up to 28 areas(24 mask areas and 4 mosaic areas)	
	ROI	Up to 8 areas	
	Image Setting	Brightness/Contrast/Saturation/Sharpness	
<b>Network</b>	Network Storage	NAS(Support NFS, SMB/CIFS), ANR	
	Protocol	IPv4/IPv6, ARP, TCP, UDP, RTCP, RTP, RTSP, RTMP, HTTP, HTTPS, DNS, DDNS, DHCP, FTP, NTP, SMTP, SNMP, UPnP, Bonjour, SIP, PPPoE, VLAN, 802.1x, QoS, IGMP, ICMP, SSL	
<b>Audio</b>	Audio Compression	G.711/AAC/G.722/G.726	
	Audio Sampling Rate	8/16/32/44.1/48KHz	
	Audio Bit Rate	16~256kbps	
	Two-way Audio	Support	
<b>System</b>	System Compatibility	API, HTTP, TCP, ONVIF Profile G & Q & S & T	
	Storage	Support microSD/SDHC/SDXC Card Local Storage, up to 256G	
	Advanced Function	BLC, HLC, 2D DNR, 3D DNR, Defog, AWB, EIS, IP Address Filtering, AGC, Anti-flicker, Corridor Mode, Deblur, Watermark	
	SIP/VoIP Support	Yes, Voice & Video-over-IP	
	Event Trigger	Black/White List, Attributes Event, Motion Detection, Network Disconnection, External Input (Optional), Audio Alarm (Optional), etc.	Black/White List, Attributes Event, Motion Detection, Network Disconnection, External Input, Audio Alarm, etc.
	Event Action	FTP Upload, SMTP Upload, SD Card Record, External Output (Optional), SIP Phone, White LED, PTZ Motion, HTTP Notification, etc.	FTP Upload, SMTP Upload, SD Card Record, External Output, SIP Phone, White LED, PTZ Motion, HTTP Notification, etc.
<b>General</b>	Working Temperature	-40°C~60°C	
	Working Humidity	0~95%(Non-condensing)	
	Power Supply	PoE (802.3at) / DC 12V/2A±10%	PoE (802.3at) / DC 12V/3A±10%
	Power Consumption	15W MAX 20W MAX (With IR on)	12W MAX 28W MAX (With IR on)
	Weather Proof	Up to IP66-rated for Weather-resistant Performance	
	Weight	2Kg (Wall Mount) / 1.8Kg (Pedestal Mount)	2.9Kg
	Dimensions	160mmX273.5mmX210mm (Wall Mount) /218mmX120mmX172mm (Pedestal Mount)	110mmX337mmX220mm
	Warranty	2 Years / 3 Years (Optional)	



	Name	AI Road Traffic Speed Dome Camera	
<b>Camera</b>	Appearance		
	Model	TS2841-X36TPC (2MP)	TS2841-X36TPC /W (2MP)
	Image Sensor	1/2" Progressive Scan CMOS	
	Min. Illumination	Color: 0.002Lux@F1.55 B/W: 0Lux with IR on	
	WDR	140dB Super WDR Pro	
	Shutter Time	1/100000s~1s	
	Digital Zoom	16X	
	Day/Night Mode	Day/Night/Auto/Customize/Schedule	
	S/N	>55dB	
	<b>Lens</b>	Focal Length	5.7~205.2mm, 36X Optical Zoom
Zoom Speed		Approx 7s (Wide-Tele)	
Field of View		H63°~H3°/D69°~D3°/V38°~V1°	
Focus Control		Auto/Semi-Auto/Manual	
Minimum Working Distance		1500/1500mm (Wide/Tele)	
Aperture		F1.55~F4.8	
Iris Control		Auto	
<b>Road Traffic Management</b>	Max. Vehicle Speed	200km/h	
	Recognition Accuracy	>95%	
	Coverage	Support simultaneous detection of 4 regions	
	Country Region Supported	More than 80 countries and regions	
	Illumination Distance	Up to 50m	
	Attributes Identification	Plate Color, Vehicle Type, Vehicle Color, Vehicle Brand, No-plate Vehicle Capture	
	Smart Traffic Function	Evidence Camera Linkage, Vehicle Counting Based on Vehicle Type, Specific Lane Management	
	White/Black List	Up to 1000 records inside the camera	
	LPR Smart Search	Support	
<b>Interface</b>	Ethernet	1*RJ45 10M/100M Ethernet Port	
	Audio I/O	1/1	
	Alarm I/O	4/2	
	RS485	Support	
<b>PTZ</b>	Pan Range/Pan Speed	360°endless / Pan Manual Speed: 0.1°~250°/s, Pan Preset Speed: 250°/s	
	Tilt Range/Tilt Speed	-5°~90°(Auto Flip) / Tilt Manual Speed: 0.1°~160°/s, Tilt Preset Speed: 160°/s	
	Proportional Zoom	Support	
	Preset Quantity	300	
	Patrol	8 Patrols, up to 48 presets each patrol	

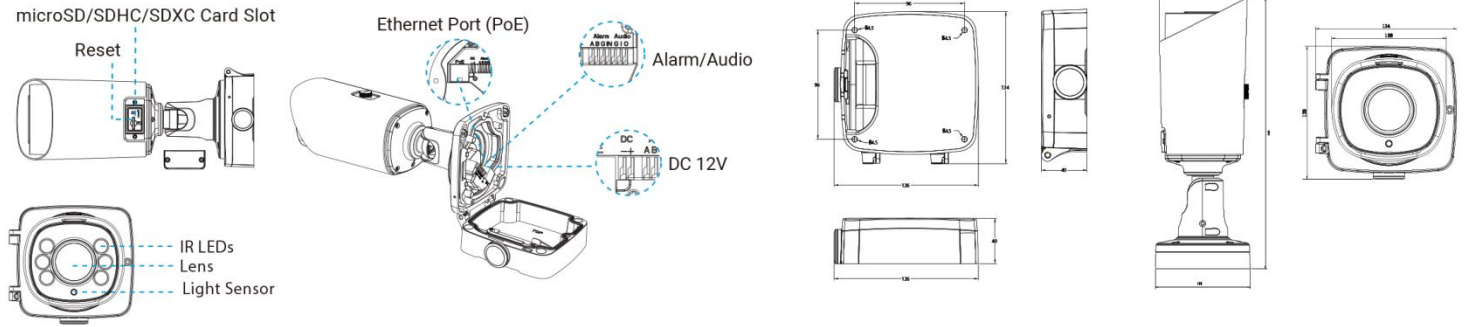


<b>PTZ</b>	Pattern	4 Patterns
	Power Off Memory	Support
	Other Function	Auto Scan, Auto Home, Preset Freezing, 3D Positioning, PTZ Limits, Initial Position
<b>Video</b>	Max. Image Resolution	1920x1080
	Primary Stream	60Hz/50Hz: 100fps@(1920x1080, 1280x960, 1280x720, 704x576)
	Secondary Stream	60Hz: 60fps@(704x576, 640x480, 640x360, 352x288, 320x240, 320x192, 320x180) 50Hz: 50fps@(704x576, 640x480, 640x360, 352x288, 320x240, 320x192, 320x180)
	Tertiary Stream	60Hz: 30fps@(1920x1080, 1280x720, 704x576, 640x480, 640x360, 320x240, 320x192, 320x180) 50Hz: 25fps@(1920x1080, 1280x720, 704x576, 640x480, 640x360, 320x240, 320x192, 320x180)
	Video Compression	H.265+/H.265(HEVC)/H.264+/H.264/MJPEG
	Video Bit Rate	16Kbps~16Mbps(CBR/VBR Adjustable)
	Privacy Masking	Up to 28 areas(24 mask areas and 4 mosaic areas)
	ROI	Up to 8 areas
	Image Setting	Brightness/Contrast/Saturation/Sharpness
<b>Network</b>	Network Storage	NAS(Support NFS, SMB/CIFS), ANR
	Protocol	IPv4/IPv6, ARP, TCP, UDP, RTCP, RTP, RTSP, RTMP, HTTP, HTTPS, DNS, DDNS, DHCP, FTP, NTP, SMTP, SNMP, UPnP, Bonjour, SIP, PPPoE, VLAN, 802.1x, QoS, IGMP, ICMP, SSL
<b>Audio</b>	Audio Compression	G.711/AAC/G.722/G.726
	Audio Sampling Rate	8/16/32/44.1/48KHz
	Audio Bit Rate	16~256kbps
	Two-way Audio	Support
<b>System</b>	System Compatibility	API, HTTP, TCP, ONVIF Profile G & Q & S & T
	Storage	Support microSD/SDHC/SDXC Card Local Storage, up to 256G
	Advanced Function	BLC, HLC, 2D DNR, 3D DNR, Defog, AWB, EIS, IP Address Filtering, AGC, Anti-flicker, Corridor Mode, Deblur, Watermark
	SIP/VoIP Support	Yes, Voice & Video-over-IP
	Event Trigger	Black/White List, Attributes Event, Motion Detection, Network Disconnection, External Input, Audio Alarm, etc.
	Event Action	FTP Upload, SMTP Upload, SD Card Record, External Output, SIP Phone, PTZ Motion, HTTP Notification, etc.
<b>General</b>	Working Temperature	-40°C~60°C
	Working Humidity	0~95%(Non-condensing)
	Power Supply	PoE (802.3at) / AC 24V/3A±10%
	Power Consumption	13W MAX / 23W MAX (With IR on)
	Weather Proof	Up to IP66-rated for Weather-resistant Performance / Vandal-proof IK10-rated Metal Housing(Optional)
	Heater	Support
	Wiper	-
	Surge Protection	6KV
	Dimensions/Weight	Φ205mmX308mm/4Kg
	Warranty	2 Years / 3 Years (Optional)

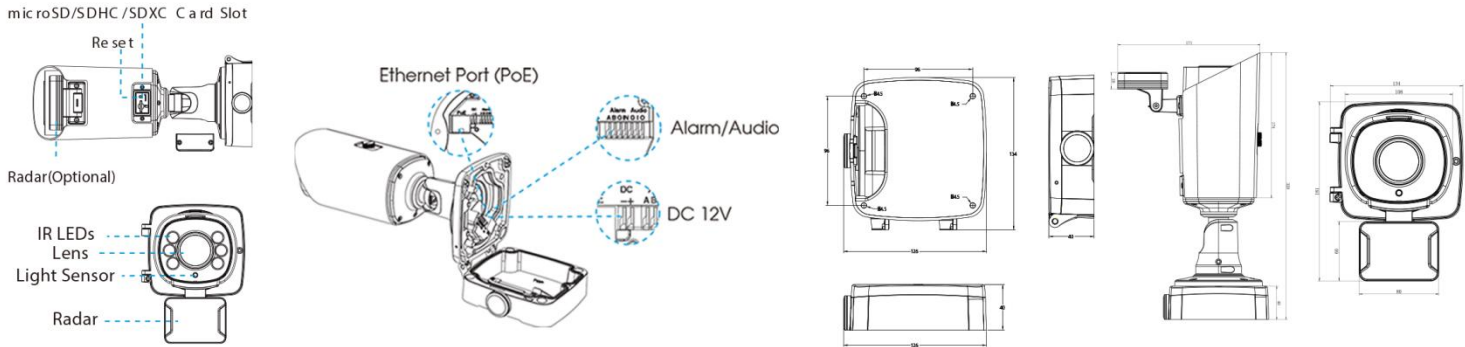


## Structure Diagrams

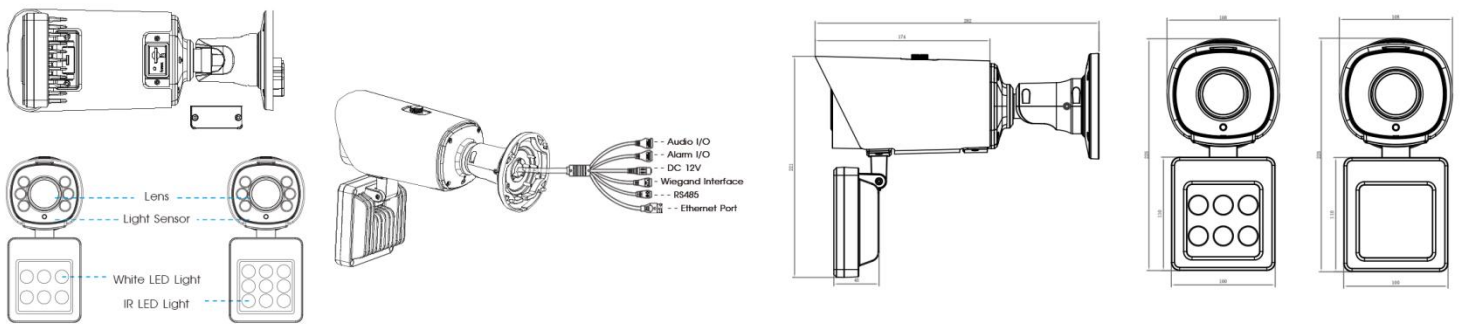
### AI Road Traffic Pro Bullet Plus Camera



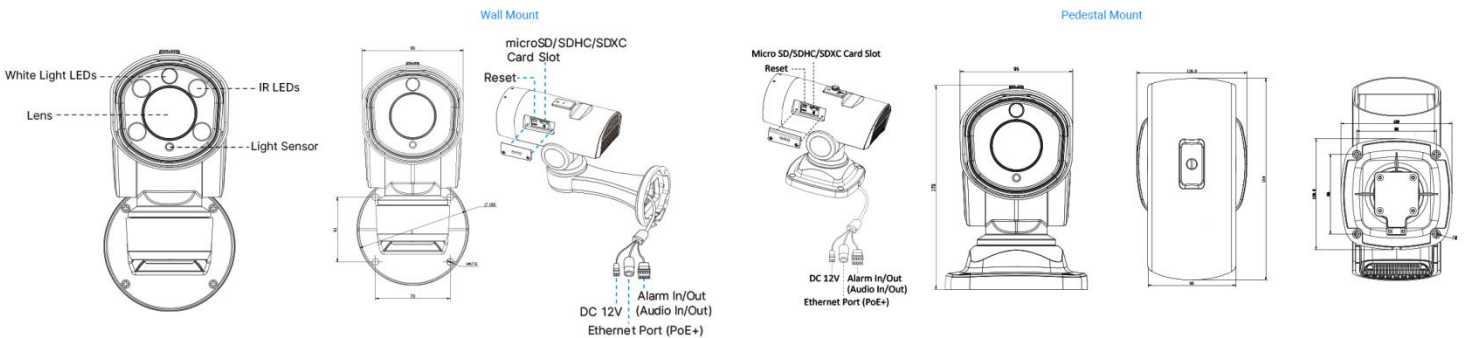
### AI Road Traffic Radar Pro Bullet Plus Camera



### AI Road Traffic Supplement Light Pro Bullet Plus Camera



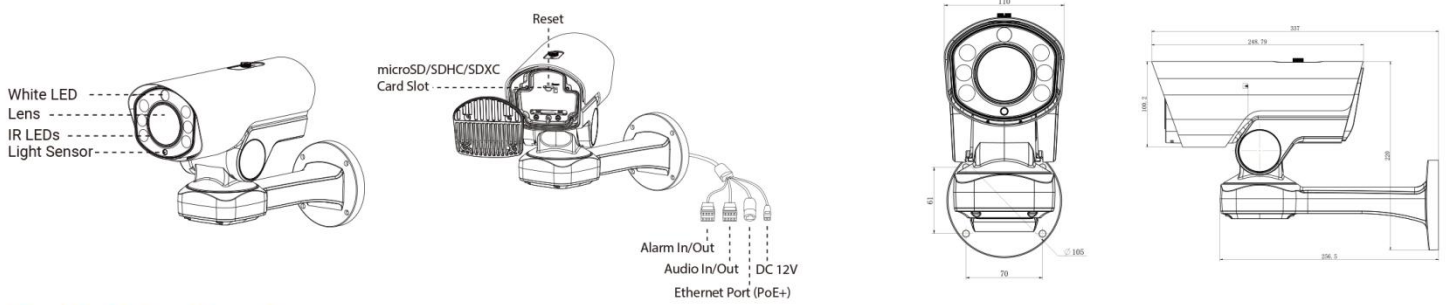
### AI Road Traffic PTZ Bullet Camera



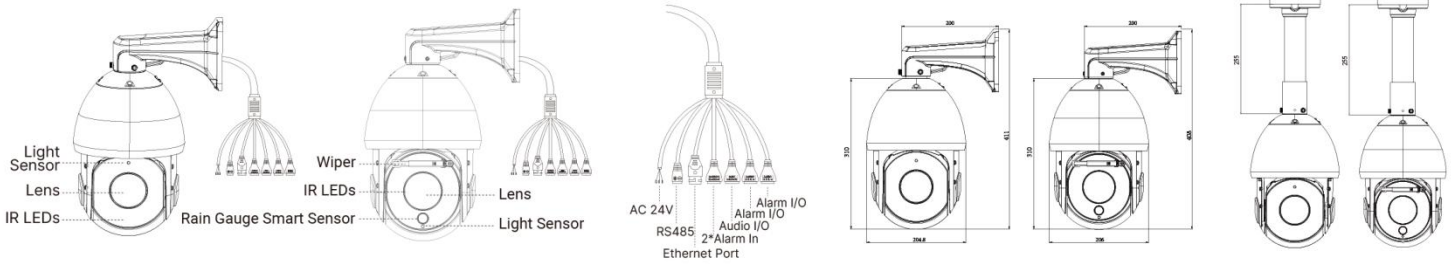
# Road Traffic Management



## AI Road Traffic PTZ Bullet Plus Camera



## AI Road Traffic Speed Dome Camera



## Accessories Support

Units: mm

### AI Road Traffic Pro Bullet Plus Camera /AI Road Traffic Radar Pro Bullet Plus Camera

A62 Junction Box(Default)

Weight: 510g  
Dimensions: 134\*126\*40mm



A01 Pole Mount

Weight: 720g  
Dimensions: 170\*51.5\*152.6mm



A03 External Corner Bracket

Weight: 900g  
Dimensions: 170\*152.5\*76.3mm



### AI Road Traffic Supplement Light Pro Bullet Plus Camera /AI Road Traffic PTZ Bullet Camera

A62 Junction Box

Weight: 510g  
Dimensions: 134\*126\*40mm



A01 Pole Mount

Weight: 720g  
Dimensions: 170\*51.5\*152.6mm



A03 External Corner Bracket

Weight: 900g  
Dimensions: 170\*152.5\*76.3mm



### AI Road Traffic PTZ Bullet Plus Camera

A01 Pole Mount

Weight: 720g  
Dimensions: 170\*51.5\*152.6mm



A03 External Corner Bracket

Weight: 900g  
Dimensions: 170\*152.5\*76.3mm



A62 Junction Box

Weight: 510g  
Dimensions: 134\*126\*40mm



### AI Road Traffic Speed Dome Camera

A41 Wall Mount (Default)

Weight: 400g  
Dimensions: 200\*129\*100mm



A01 Pole Mount

Weight: 720g  
Dimensions: 170\*51.5\*152.6mm



A03 External Corner Bracket

Weight: 900g  
Dimensions: 170\*152.5\*76.3mm



A42 Pendant Mount

Weight: 650g  
Dimensions: 116.5\*255mm



A42-L Extension Lever

Weight: 325g  
Dimension: 57\*255mm



A43 Junction Box

Weight: 1000g  
Dimensions: 195\*164\*80mm



**MileSight** | [www.milesight.com](http://www.milesight.com)

Contact Us: [sales@milesight.com](mailto:sales@milesight.com) [support@milesight.com](mailto:support@milesight.com)



Add: 220 NE 51st Street, Oakland Park, Florida 33334, USA  
Tel: +1-800-561-0485

Add: 925, Anyang SK V1 Center, LS-ro 116beon-gil, Dongan-gu, Anvang-si, Korea  
Tel: +82-31-990-7732

Add: Building C09, Software Park Phase III, Xiamen 361024, Fujian, China  
Tel: +86-592-5922772